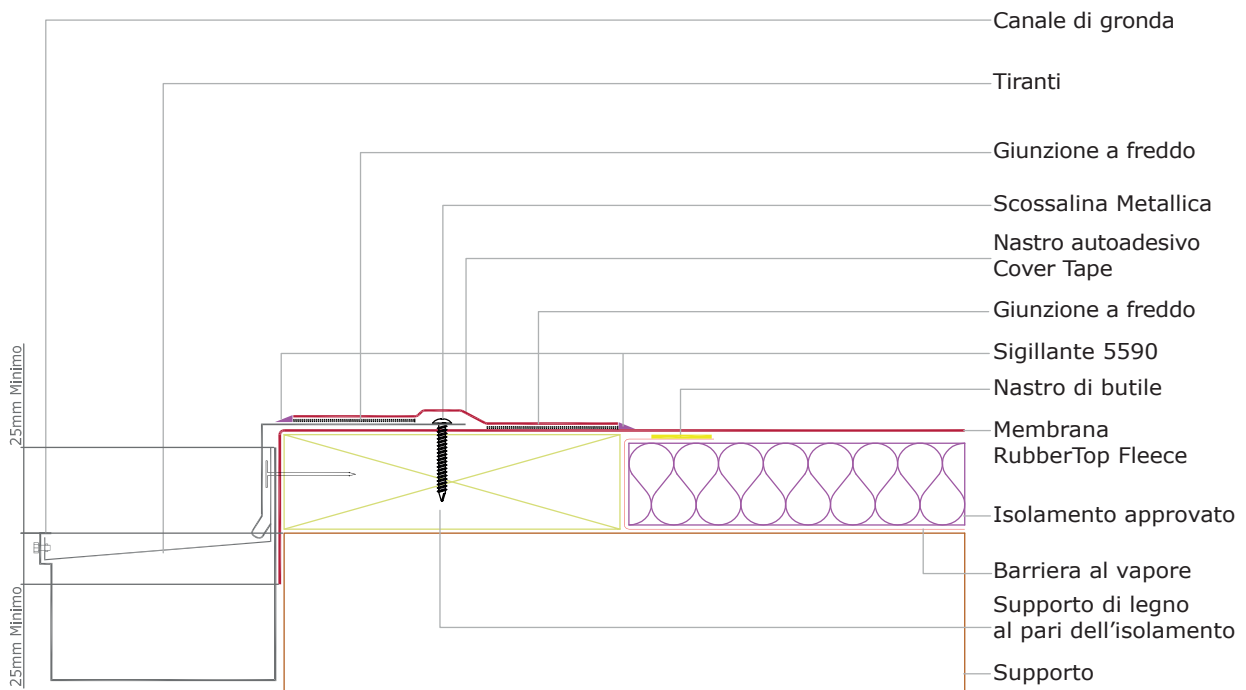
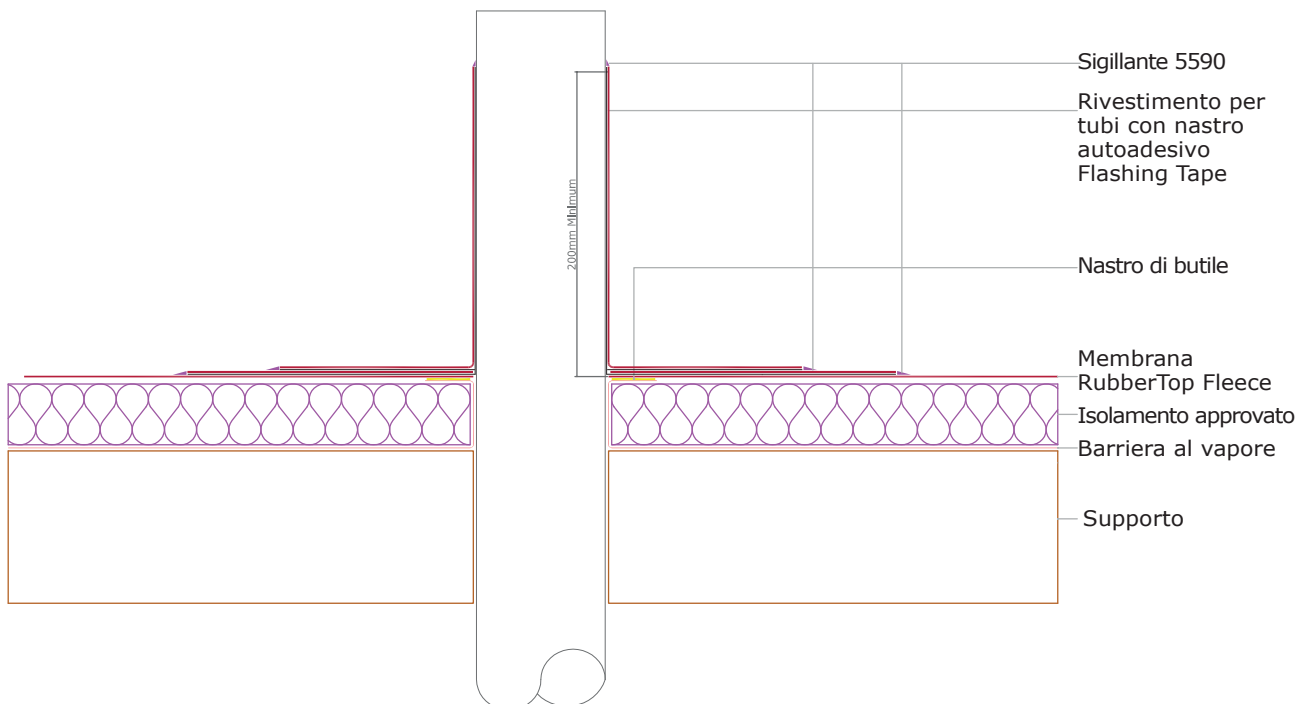
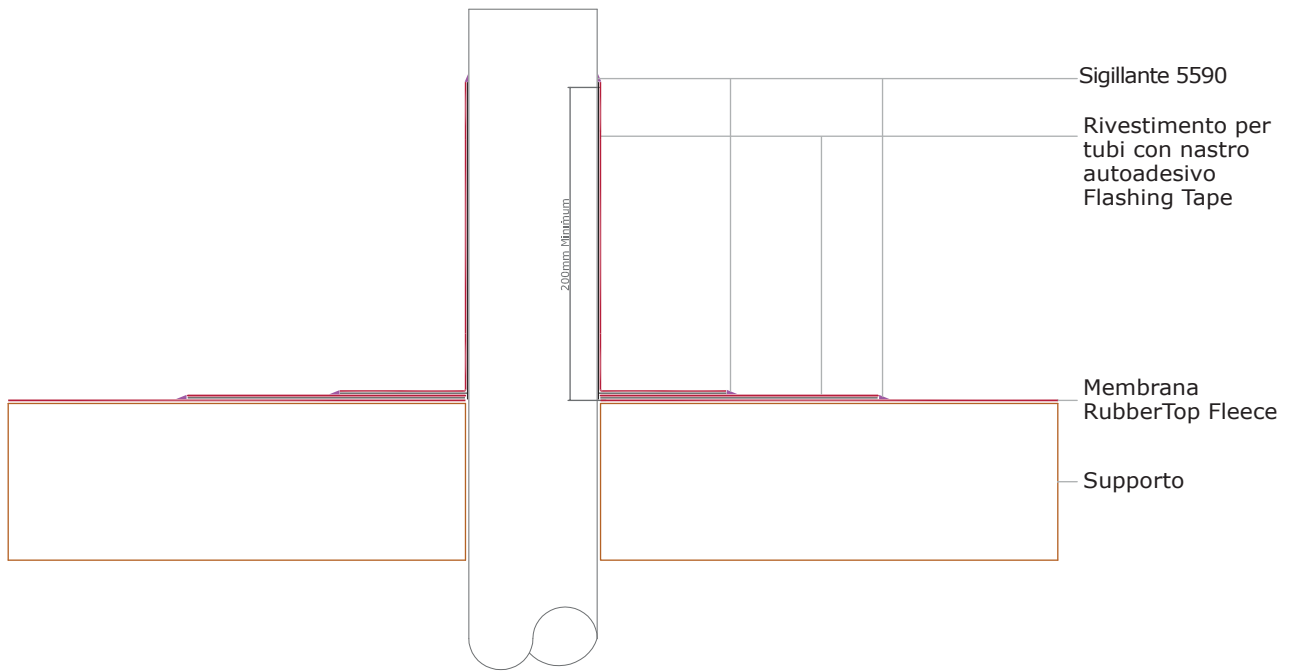
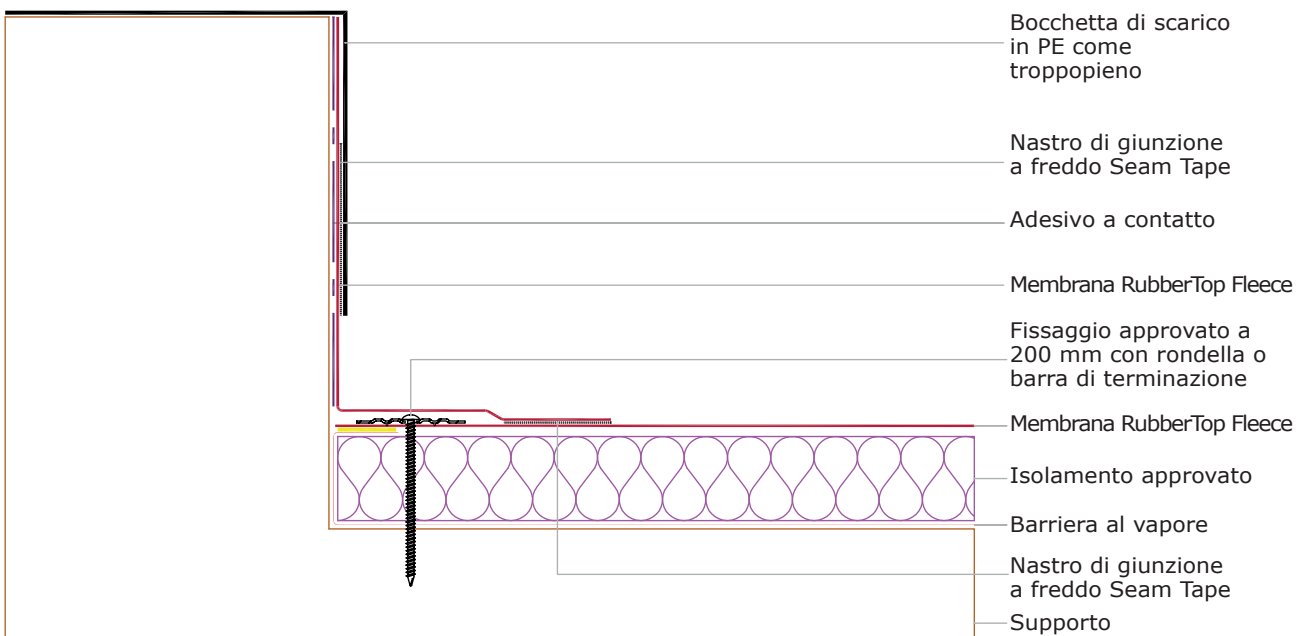
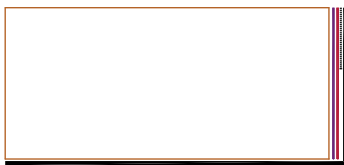
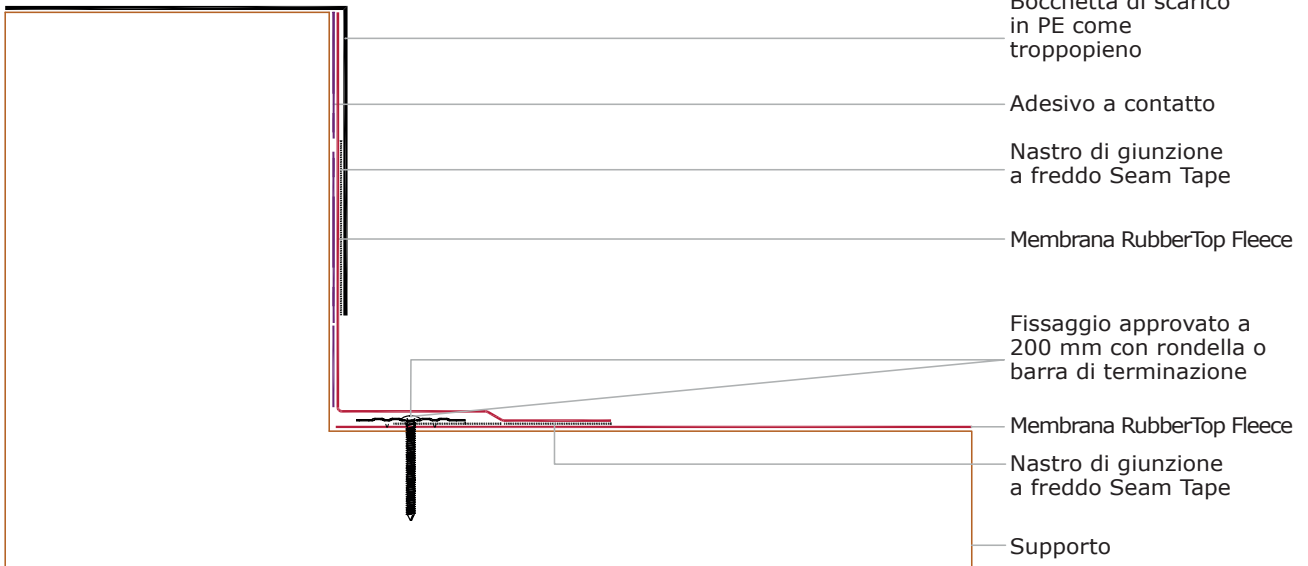
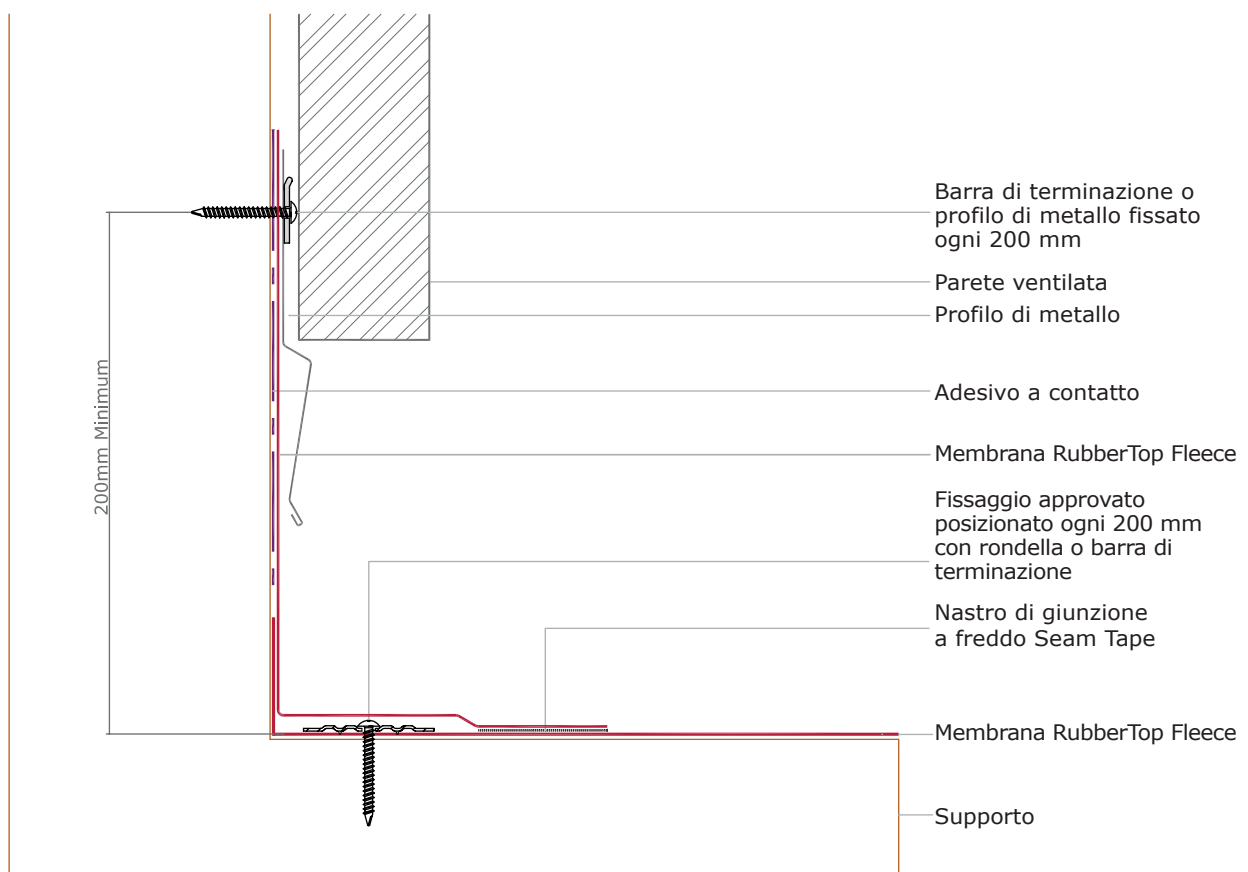
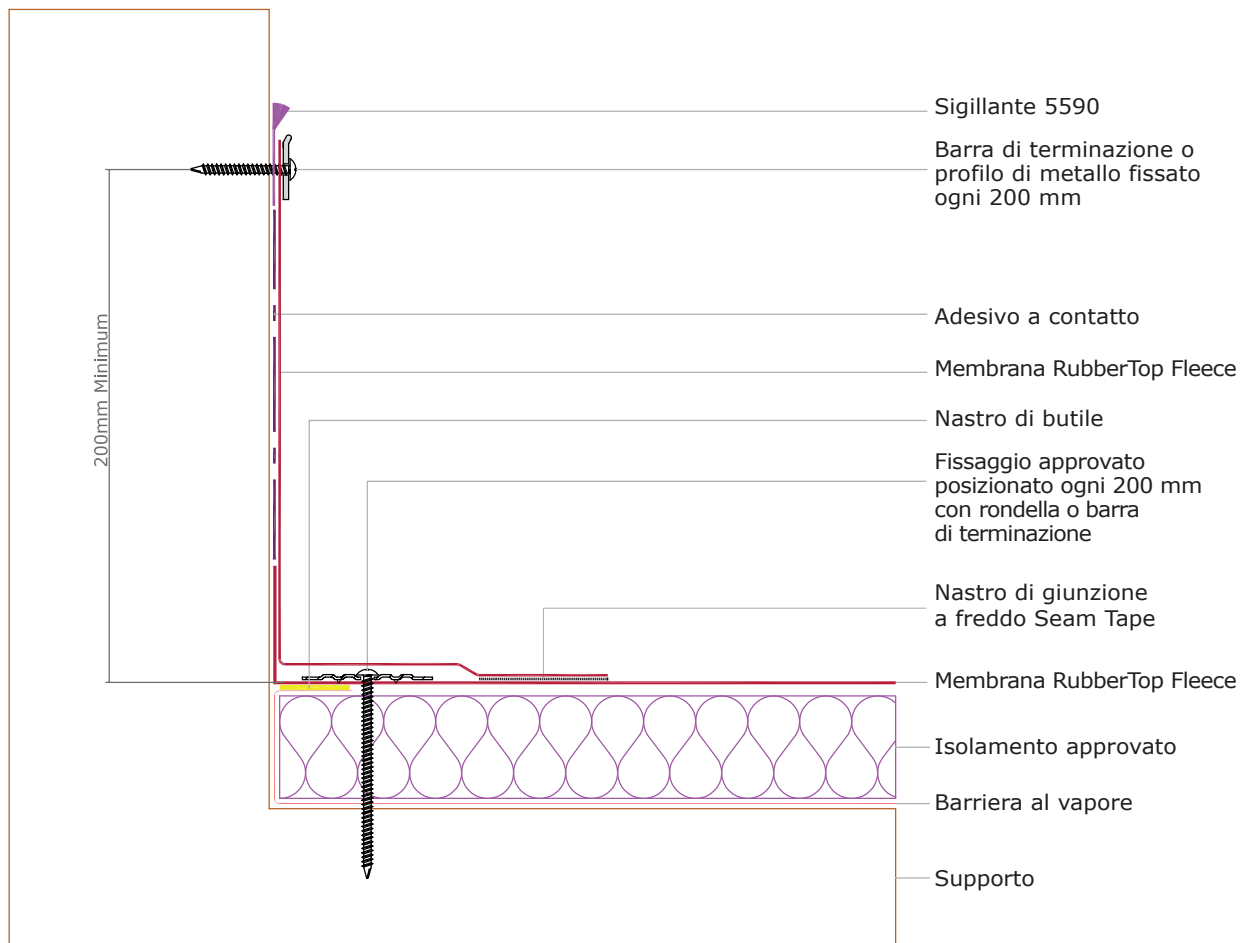


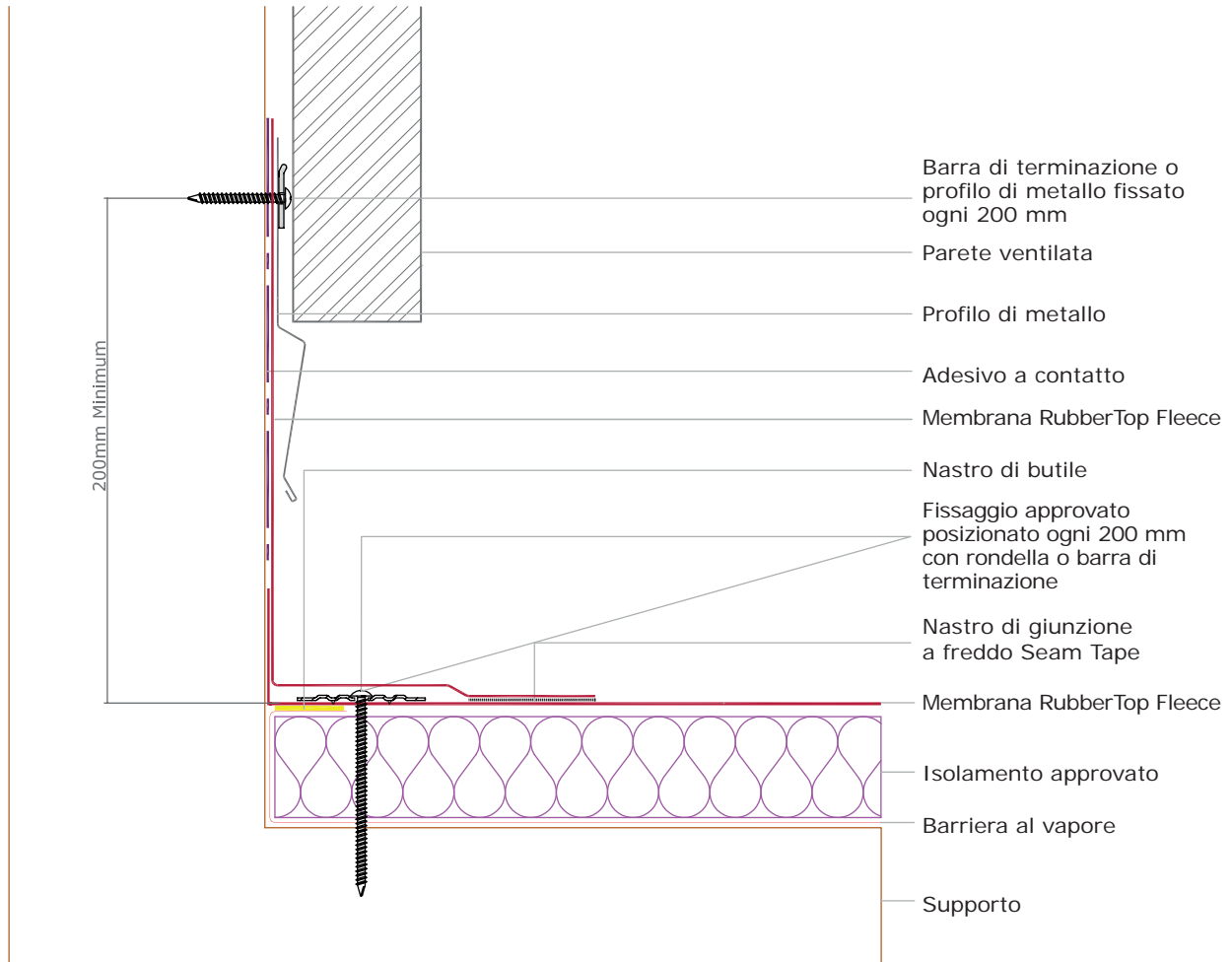
Questo dettaglio è utilizzato solo dove un incontrollato flusso di acqua sul lato dell'edificio è accettabile.









RUB - FLE - 075**Tetto caldo a vista fissato meccanicamente - dettaglio di raccordo verticale su parete ventilata****RUB - FLE - 076****Tetto freddo a vista fissato meccanicamente - dettaglio giunto di dilatazione**